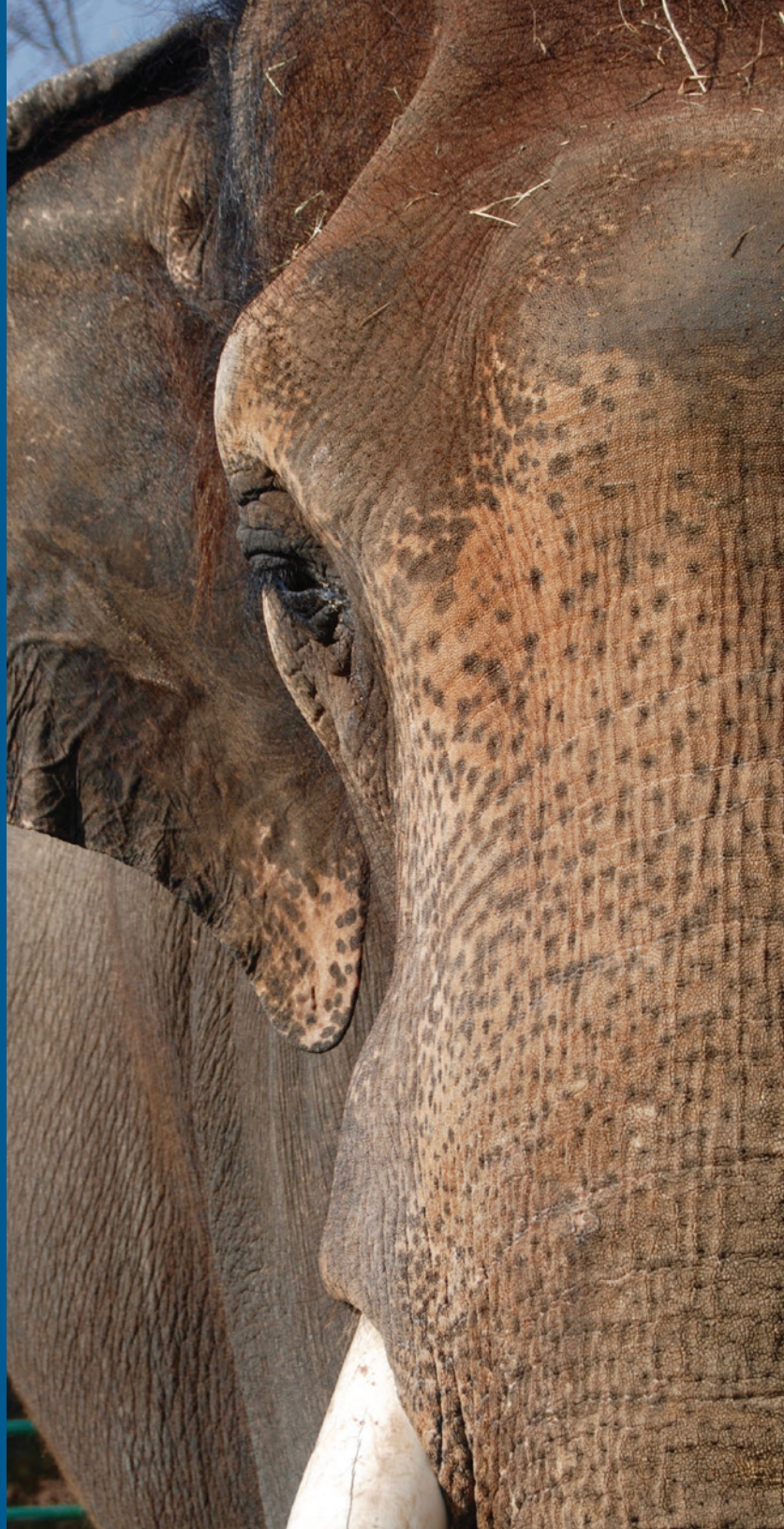




ONE HEALTH | ONE MISSION

**The Campaign for World-Class Animal Health Care
at the Rosamond Gifford Zoo**



The Rosamond Gifford Zoo at Burnet Park is a national leader in animal care, research, conservation and saving species. As stewards of threatened and endangered species, we are dedicated to ensuring the health and well-being of the creatures under our care – matching passion with expertise – and setting the standard for nationally and internationally accredited zoos in the 21st century.

We have now embarked on one of the most critically important projects undertaken at the zoo in more than a decade.



"This project represents an important upgrade to our zoo's ability to provide state-of-the-art diagnostic and medical treatment to every animal in our care and our ability to safely and comfortably quarantine new animals. We are 100-percent committed to maintaining our zoo's status as a world-class institution where animal care and welfare is second to none."

RYAN MCMAHON
ONONDAGA COUNTY EXECUTIVE



Onondaga County and the Rosamond Gifford Zoo have launched construction on a state-of-the-art animal health center that will replace a decades-old, 1,500-square-foot clinic in the zoo with a 20,000-square-foot, free-standing health center offering cutting-edge health care to the wide variety of wild animal species under our care.

The new Animal Health Center will encompass a teaching hospital for future zoo veterinarians as well as a forum for medical and behavioral research. It will also provide public education opportunities for learners of all ages from our region and beyond – actively connecting people to our animals, our caregivers and the natural world.

We invite you to become a part of this transformational project and help us bring to fruition Central New York's premier wild-animal health center.

GOAL:

To raise
\$1.1 million
to equip the new state-of-the-art Animal Health Center with the latest medical technologies for supporting collaborative innovation and individualized care for the animals at the Rosamond Gifford Zoo.

Our Story ...

When the Rosamond Gifford Zoo's current animal clinic was built in the 1980s, it was ground-breaking for its time. In addition to providing an exam room, X-ray station, surgical suite and quarantine area for zoo animals, the clinic was among the first in the world to have public windows on treatment rooms, giving zoo visitors a first-hand look at animal health care in action.

Since then, so much has changed! The number of endangered species in our care has grown. Medical technologies and our understanding of the needs of many wild species have greatly advanced. Our participation in research on behalf of animal health and wildlife conservation has intensified. And we have become a teaching facility where Cornell University College of Veterinary Medicine veterinarians, residents, interns and students practice and teach as part of Cornell's zoological medicine program.

OVER THE COURSE
OF A YEAR....

364 ROUTINE ANIMAL PHYSICALS ARE CONDUCTED

40 NEONATAL CHECKS ARE PERFORMED

50 GERIATRIC ANIMALS RECEIVE CARE

400 ANIMAL VACCINATIONS ARE GIVEN

10 ANIMALS ARE TREATED OFF-SITE

20 ANIMALS ARE TREATED IN THE FIELD

250 SURGICAL PROCEDURES WITH SEDATION ARE PERFORMED

500 ANIMALS ARE SEEN BY CORNELL VETERINARY STAFF

60 CORNELL VETERINARY STUDENTS RECEIVE HANDS-ON EXPERIENCE

5,000-6,000 VISITORS WILL HAVE THE OPPORTUNITY TO SEE
AN ANIMAL PROCEDURE AT THE NEW ANIMAL HEALTH CENTER

COUNTLESS YOUTH WILL BE ABLE TO DREAM
OF BEING A VETERINARIAN WHEN THEY GROW UP



SNOW LEOPARD ANNUAL PHYSICAL EXAM

As a result of our growth over the years, our modest clinic can no longer adequately serve the important missions at hand.

The Association of Zoos & Aquariums (AZA) has noted that our clinic is too small for a zoo of our size, cannot provide adequate treatment or hospitalization for most of the larger species in our care and lacks proper quarantine areas to ensure best health and safety practices.

Our zoo and our community are devoted to providing the very best health care available to every animal in our care – from our tiny poison dart frogs to our 9,000-pound elephants – and to continuing our growing reputation as a leader in animal care. The new Animal Health Center will ensure we meet those standards for many years to come.

MOHOLI BUSH BABY ANNUAL PHYSICAL EXAM





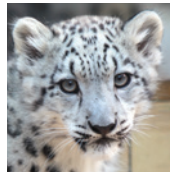
Over the years our dedicated staff have diagnosed, treated and performed life-saving procedures, root canals, managed difficult births and long-term illnesses – many times using their ingenuity and creative solutions to ensure successful outcomes. The new health center will provide the necessary tools to facilitate their work and match their expertise.

One Health One Mission

The One Health philosophy expresses the concept that humans, animals and the world we live in are inextricably linked. We are committed to the approach of global collaboration between organizations and multiple disciplines to achieve optimal health for people, animals and the environment.

The Animal Health Center will serve as a platform to educate visitors about the research we conduct that aids the animals in our care and in the wild, and the collective, connected health of people, animals and our planet.

Among our zoo's contributions to wild animal health care are:



Early diagnosis of and treatment of Swimmer Syndrome in our snow leopard cub Marcy, which corrected a condition that would have left her unable to walk and introduced new physical therapies that are being shared with other zoos.



Our Cornell and zoo teams' successful delivery of a baby patas monkey, Iniko, by C-section when the mother succumbed to renal failure during her birth. We became the first known zoo to hand-rear a baby patas monkey. The detailed daily records on raising Iniko will be shared to increase the body of knowledge on patas monkeys and similar primate species.



Our work to develop stress-free methods of monitoring pregnancy in red pandas and snow leopards. Over more than a year of daily training with operant conditioning and positive rewards, we trained a female red panda to submit to ultrasound exams and a female snow leopard to allow radiography of her abdomen, thereby enhancing prenatal care for these critically endangered species.



Elephant endotheliotropic herpesviruses (EEHV) Research

Our zoo has been involved in the Smithsonian National Zoo and Conservation Biology Institute EEHV lab since it was founded in 1995. Twice a week we send blood samples from our herd to the lab in Washington D.C. to monitor for the disease, which is believed to be latent in all elephants, but tends to unpredictably activate in young calves.

Sadly, recent events have also immersed us in the world of detection, treatment and study of EEHV, the deadly strain of herpes virus that killed our two Asian elephant calves, Ajay and Batu, in December 2020.

Friends of the Zoo has established the Ajay and Batu Memorial Fund to ensure the Animal Health Center has on-site equipment for EEHV testing and treatment, eliminating the need to outsource elephant blood tests and plasma extraction, among other important tools for fighting and researching EEHV.

Other Significant Research Projects

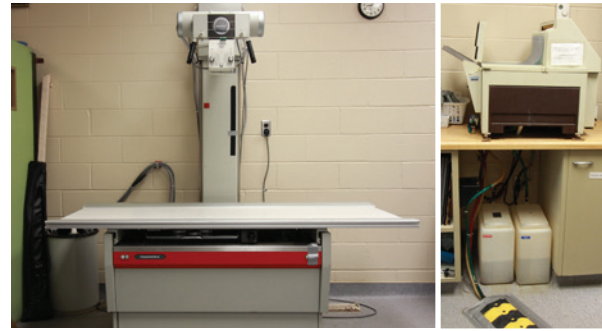
Besides the wealth of information routinely shared among AZA institutions, we also participate in important research projects conducted by residents at Cornell and other prominent veterinary schools. These include:

- **A current study of Asian elephant cognition and problem-solving that may contribute to strategies for reducing human-elephant conflict** in their range countries, a key factor in their critically endangered conservation status.
- **A study on Vitamin D and calcium metabolism in Asian elephants to shed light on their dietary requirements** and enhance nutrition for elephants in human care.
- **A study on the acoustic repertoire of Humboldt penguins** to explore variation in their vocalizations and assess the potential for individual discrimination and communication in this species.
- **A study showing that levels of the stress hormone cortisol in North American porcupine** are much higher in wild porcupines than in those in zoos.
- **A study comparing dried blood spots on filter paper to whole blood samples for blood tests on Hoffmann's two-toed sloths** indicated the far smaller, less invasive spot samples produced the same results and were easier to store and ship.

The Next Chapter

Onondaga County allocated \$7.5 million for the animal health center in 2019, and we broke ground on the project this past September. **Construction is quickly progressing and the project is on track for completion in September 2021.** County funding includes health center design, engineering, site work, construction, infrastructure and landscaping. The Friends of the Zoo has committed to furnishing essential medical equipment for the center.

Friends of the Rosamond Gifford Zoo has pledged to supply the necessary cutting-edge diagnostic and treatment equipment with help from key sponsors and a Capital Campaign raising \$1.1 million.



EXISTING RADIOGRAPHY EQUIPMENT



STATE-OF-THE-ART DIGITAL RADIOGRAPHY EQUIPMENT

BREAKING GROUND:
L to R, Zoo Director Ted Fox,
Cornell University Veterinarian Dr. Rebecca Eddy,
Onondaga County Executive Ryan McMahon,
Friends of the Zoo Board Member Al Gough,
County Executive for Physical Services
Mary Beth Primo and County Facilities
Management Commissioner Archie Wixson.





Animal Health Center Key Features

Larger exam and treatment rooms will accommodate more and larger animals and eliminate the need to transport animals for treatment off zoo grounds or to perform sterile procedures in the field.

Spacious surgical, diagnostic and meeting spaces will accommodate our teaching partnership with Cornell Veterinary College and expand the potential for partnering with other veterinary and zoology education programs.

A dedicated laboratory and pharmacy will allow us to expedite test results, treatments and medications.

A new quarantine facility will meet all the safety standards required by AZA and our industry, providing separate, enclosed quarantine areas for large carnivores, primates, birds and aquatic animals and a separate dietary prep area.

Large video screens and new video technology will allow us to share everything we do for animal health – from nutrition to routine exams to radiology, root canals and surgical procedures – with our Central New York community and beyond.

Floor to ceiling windows will allow zoo guests to look in on the lab, nursery/ICU, animal nutrition kitchen, treatment rooms and surgical suite to serve our goals of transparency and education of animal care at the zoo.

A Children's Veterinary Clinic with child-size exam, treatment and surgery stations, a variety of plush "patients" and toy medical tools will give our youngest guests an opportunity to engage in imaginative play based on their experience visiting the Animal Health Center.

"This facility embodies a new era for our zoo, where we have the technology, the space and the setting to put into practice everything we now know about the types of care that different animals need to thrive, share our expertise with future animal health practitioners and educate our public to support healthy wildlife, healthy ecosystems and a healthy community."

TED FOX
ZOO DIRECTOR



Our Vision ...

The Rosamond Gifford Zoo Animal Health Center will

- be a free-standing complex exceeding 20,000 square feet – 10 times the size of the in-house clinic and quarantine rooms the zoo relied on for nearly 40 years
- be a state-of-the-art health center that will exceed AZA standards for decades to come, cementing our reputation as a world-class animal care institution
- nurture and expand our 22-year partnership with Cornell University College of Veterinary Medicine, allowing veterinarians from this leading veterinary school to practice at the zoo while their students, interns and residents benefit from rotations through a premier zoological medical center
- add far-reaching capabilities to become a center for conservation research dedicated to improving the health and well-being of animals at AZA-accredited zoos and aquariums and their wild counterparts
- vastly increase our ability to provide the public with educational experiences and inside views of animal health care in action, including a Children's Veterinary Clinic where youngsters can "treat" plush animal patients with toy equipment a few steps away from the professionals.

*"For 50 years,
the Friends of the Zoo
has existed to support
our wonderful zoo and its
brilliant staff in providing for
every animal in their care.
It's fitting that we start the
next 50 years by providing the
new Animal Health Center
the equipment needed to
offer the best medical care
available to our animals
right here at the zoo."*

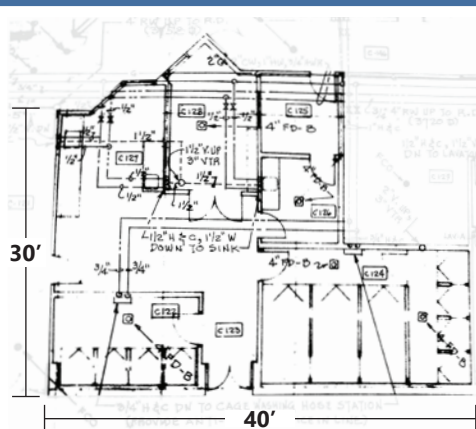
**CARRIE LARGE
EXECUTIVE DIRECTOR
FRIENDS OF THE ZOO**

NEW ANIMAL HEALTH CENTER COMPLEX
20,000 square feet

197'-8"

73'-4"

**CURRENT ANIMAL
HEALTH CARE FACILITY**
1,500 square feet





“WHEN
ONE TUGS AT
A SINGLE THING
IN NATURE,
ONE FINDS IT
ATTACHED TO
THE REST OF
THE WORLD.”

– John Muir



ONE HEALTH | ONE MISSION

Embracing the intrinsic connection between people, animals, plants and our shared environment to achieve optimal global wellness

The Animal Health Center

AT THE ROSAMOND GIFFORD ZOO WILL EXEMPLIFY THE ONE-HEALTH PHILOSOPHY:

PROVIDING *state-of-the-art health care for more than 215 animal species from prenatal to geriatric care*

TRAINING *future animal health practitioners from Cornell University and other national veterinary institutions*

SHARING *data, research and best practices to further animal care and conservation in North America and worldwide*

CONNECTING *people to animals, nature and our planet*

EDUCATING *people about the collective, connected health of all living things.*



ONE CONSERVATION PLACE, SYRACUSE, NY 13204
DEVELOPMENT@ROSAMONDGIFFORDZOO.ORG
ROSAMONDGIFFORDZOO.ORG
315.435.8511 X8526